

Weldcraft™ A-125 Series

Formerly WP-9 Series

Hand-Held Air-Cooled
TIG Welding Torches



Quick Specs

Models

A-125
A-125 Valve
A-125 Flex
A-125 Flex Valve
A-125 Pencil

Applications

Maintenance and repair
Home/hobby
Metal art/sculpture
Motorsports
Fabrication

Rated Output

DC: 125 A, AC: 100 A

Duty Cycle 60%

Electrode Range

.020–1/8 in. (0.5–3.2 mm)

A-125 Series TIG torches

Formerly known as the WP-9 Series, the A-125 Series torches are designed for optimal control while welding thin-gauge materials, especially in hard-to-reach places. This series offers a variety of configurations suited to diverse welding applications.

The lightweight body reduces fatigue and downtime, and increases operator comfort.

Perfected control. The gas valve offers improved shielding gas control (A-125 Valve).

Flexibility. Flexible neck easily adjusts to any angle for improved torch control (A-125 Flex).

The pencil-style model without a back cap allows for superior access to confined areas (A-125 Pencil).

Combine the flexible neck and gas valve for welding limited-access joints using power sources without gas solenoids (A-125 Flex Valve).

Note: Torches delivered may vary slightly from images shown.



Additional torch models



Miller Electric Mfg. LLC
An ITW Welding Company
1635 West Spencer Street
P.O. Box 1079
Appleton, WI 54912-1079 USA

Equipment Sales US and Canada
Phone: 866-931-9730
FAX: 800-637-2315
International Phone: 920-735-4554
International FAX: 920-735-4125

MillerWelds.com
f t y i n



Torch Packages

Models		1-Piece Power Cable Standard Rubber		2-Piece Power Cable Rubber	
Old Model	New Name	12.5 ft. (3.8 m)	25 ft. (7.6 m)	12.5 ft. (3.8 m)	25 ft. (7.6 m)
WP-9	A-125	WP-9-12-R	WP-9-25-R	—	—
WP-9V	A-125 Valve	WP-9V-12-R	WP-9V-25-R	—	WP-9V-25-2
WP-9F	A-125 Flex	WP-9F-12-R	WP-9F-25-R	WP-9F-12-2	WP-9F-25-2
WP-9FV	A-125 Flex Valve	WP-9FV-12-R	WP-9FV-25-R	—	WP-9FV-25-2
WP-9P	A-125 Pencil	WP-9P-12-R	WP-9P-25-R	—	—

V = Valve F = Flex FV = Flex Valve P = Pencil

Torch packages include torch body, handle, power cable, and long back cap (excluding the A-125 Pencil model).

Connectors

1-piece power cable connectors



273483
25 mm (small) Dinse-style gas thru for one-piece air-cooled torch.



194722
50 mm Dinse-style gas thru for one-piece air-cooled torch.



195378
50 mm Dinse-style for one-piece air-cooled torch.



105257
Power cable adapter for one-piece air-cooled torch.

2-piece power cable connectors



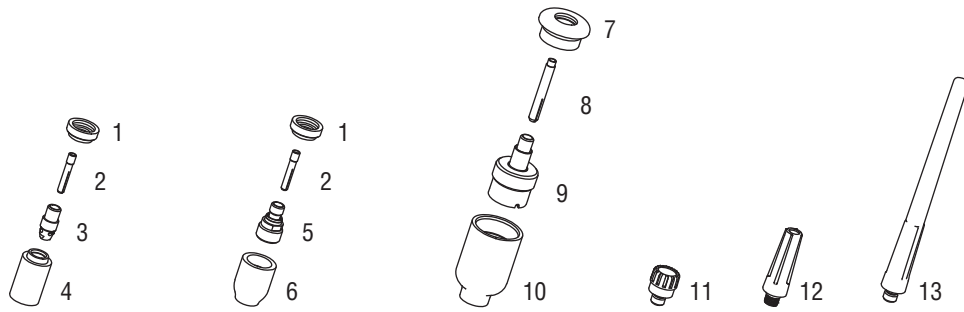
127836
25 mm (small) Dinse-style for two-piece cable air-cooled torch.



129527
50 mm Dinse-style for two-piece cable air-cooled torch.

Machines	Connection Type	1-Piece Power Cable Connectors	2-Piece Power Cable Connectors
TIG Machines			
CST™ 280	50 mm Dinse-style	195378	129527
	Tweco-style	N/A	191981
CST™ 282	Dinse-style	195378 (50 mm)	042533 (70 mm)
	Tweco-style	N/A	191981
Dynasty® 200/210/280/300/350/400	50 mm Dinse-style	195378	129527
Maxstar® 150 STL/STH, 161 STL/STH	25 mm (small) Dinse-style	273483 (gas thru)	127836
Maxstar® 200/210/280/350/400	50 mm Dinse-style	195378	129527
Syncrowave® 200/210	50 mm Dinse-style	194722 (gas thru)	129527
Syncrowave® 250 DX/300/350 LX/400	50 mm Dinse-style	195378	129527
	1/2 in. stud	105257	N/A
Multiprocess Machines			
Dimension™ 302/452/NT 450/650/652	1/2 in. stud	105257	N/A
Dynasty® 280 DX Multiprocess/ 300 Multiprocess	50 mm Dinse-style	195378	129527
Maxstar® 280 Multiprocess	Tweco-style	N/A	191981
Multimatic® 200/215/220 AC/DC	25 mm (small) Dinse-style	273483 (gas thru)	127836
Multimatic® 235/255	50 mm Dinse-style	195378	129527
PipeWorx	1/2 in. stud	105257	N/A
XMT® 304/350	50 mm Dinse-style	195378	129527
XMT® 450	1/2 in. stud	105257	N/A
Engine-Driven Machines			
Most Big Blue®, Trailblazer®, Bobcat™, Blue Star® and Wildcat® models	1/2 in. stud	105257	N/A
Big Blue® 450 Duo CST	50 mm Dinse-style	195378	129527
Other Adapter			
	Stud to Dinse-style adapter	232728	

Consumables (Refer to Owner's Manual for additional replacement parts.)



Non-Gas Lens									
Electrode Size — inch (mm)	.040 (1.0)		1/16 (1.6)		3/32 (2.4)		1/8 (3.2)		
1 Insulator (required)	598882		598882		598882		598882		
2 Collet	13N21		13N22		13N23		13N24		
3 Collet Body	13N26		13N27		13N28		13N29		
Nozzle Size — size # (inch)	3 (3/16)	4 (1/4)	5 (5/16)	6 (3/8)	7 (7/16)	8 (1/2)	10 (5/8)	12 (3/4)	Short
4 Alumina	—	13N08	13N09	13N10	13N11	13N12	13N13	—	—
* Lava	—	13N14	13N15	13N16	13N17	—	13N19	—	—
* Long Lava	796F70	—	796F72	796F73	—	—	—	—	—
* X-Long Lava	796F74	796F75	—	796F77	—	—	—	—	—
Gas Lens									
Electrode Size — inch (mm)	.040 (1.0)		1/16 (1.6)		3/32 (2.4)		1/8 (3.2)		
1 Insulator (required)	598882		598882		598882		598882		
2 Collet	13N21		13N22		13N23		13N24		
5 Gas Lens	45V42		45V43		45V44		45V45		
Nozzle Size — size # (inch)	3 (3/16)	4 (1/4)	5 (5/16)	6 (3/8)	7 (7/16)	8 (1/2)	10 (5/8)	12 (3/4)	Short
6 Alumina Gas Lens	—	53N58	53N59	53N60	53N61	53N61S	—	—	—
Large Diameter Gas Lens									
Electrode Size — inch (mm)	.040 (1.0)		1/16 (1.6)		3/32 (2.4)		1/8 (3.2)		
7 Insulator (required)	54N63-20		54N63-20		54N63-20		54N63-20		
8 Collet	13N21L		13N22L		13N23L		13N24L		
9 Large Diameter Gas Lens	45V0204S		45V116S		45V64S		995795S		
Nozzle Size — size # (inch)	3 (3/16)	4 (1/4)	5 (5/16)	6 (3/8)	7 (7/16)	8 (1/2)	10 (5/8)	12 (3/4)	Short
10 Large Dia. Gas Lens	—	—	—	57N75	—	57N74	53N88	53N87	53N89
* Large Dia. Gas Lens-L	—	—	—	57N75L	—	57N74L	53N88L	53N87L	—
* Large Dia. Gas Lens-XL	—	—	—	57N75XL	—	57N74XL	53N88XL	53N87XL	—
Back Caps									
11 Short	41V33		12 Medium 41V35		13 Long 41V24				

*Not shown.

Tungsten

Tungsten for the most demanding TIG welding applications!

Available in four types and industry-standard diameters, our line of Weldcraft™ tungsten electrodes has undergone rigorous testing to ensure the highest quality and durability. Color-coded packages include ten 7-inch (175 mm) tungsten electrodes.

Note: Refer to manufacturer SDS sheets for proper preparation and safety. Use proper ventilation/capture during preparation. Refer to manufacturer warning regarding ventilation.



Type	Diameter in. (mm)	Part #	Type	Diameter in. (mm)	Part #
2% Ceriated (EWCe-2)			Pure (EWP)		
Performs well in DC welding and arc starting at low-current settings, and offers excellent performance in AC processes.	0.040 (1.0)	WC040X7	Forms a clean, balled end when heated and provides good arc stability for AC welding with a balanced or unbalanced squarewave or sine wave.	0.040 (1.0)	—
	1/16 (1.6)	WC116X7		1/16 (1.6)	WP116X7
	3/32 (2.4)	WC332X7		3/32 (2.4)	WP332X7
	1/8 (3.2)	WC018X7		1/8 (3.2)	WP018X7
	5/32 (4.0)	WC532X7		5/32 (4.0)	—
2% Lanthanated (EWLa-2)			Rare Earth (EWG)		
Provides excellent arc starting, arc stability and re-ignition, and less tip erosion in AC or DC welding. Can substitute for 2% Thoriated.	0.040 (1.0)	WL2040X7	Combines the best of all alloying elements, and provides excellent arc stability in AC or DC welding.	0.040 (1.0)	—
	1/16 (1.6)	WL2116X7		1/16 (1.6)	WG116X7
	3/32 (2.4)	WL2332X7		3/32 (2.4)	WG332X7
	1/8 (3.2)	WL2018X7		1/8 (3.2)	WG018X7
	5/32 (4.0)	WL2532X7		5/32 (4.0)	—

Replacement Parts

Torch Bodies		
A-125		WP-9
A-125 Valve		WP-9V
A-125 Flex		WP-9F
A-125 Flex Valve		WP-9FV
Handles		
A-125 (ribbed)		H-100R
A-125 Valve (knurled)		H-100
A-125 Flex (ribbed)		105Z55R
A-125 Flex Valve (knurled)		105Z55
Flex Head Only		
A-125 Flex/Flex Valve		9F
Valve Knob		
All valve models		VS-2
Power Cables and Hoses		
	12.5 ft. (3.8 m)	25 ft. (7.6 m)
Rubber	57Y01R	57Y03R
Mono Flex™	57Y01MF	57Y03MF
2-Piece Rubber	57Y01-2	57Y03-2

Genuine Miller® Accessories



Accessory Kit AK1C
Includes one long back cap, one of each size (#4, #5, #6) alumina nozzle, and one of each size (.040, 1/16 inch) of the following: collet, collet body, and 7-inch 2% ceriated tungsten electrode.



Accessory Kit AK-150MFC
Allows welding operators to customize their standard A-150 (WP-17) or A-125 (WP-9) TIG torch for their specific application. Kit converts into 28 different torch styles while using the A-150 and A-125 existing cable. Features collets, collet bodies, nozzles, torch heads, handle and more.

Extension Kit EK-2-25-R 25 ft. (7.6 m), rubber



Cable Covers
WC-3-10 10 ft. (3 m)
WC-3-22 22 ft. (6.7 m)
WC-3-48 48 ft. (14.6 m)



Wireless Remote Foot Control 301580
For remote current and contactor control. Receiver plugs directly into the 14-pin receptacle of Miller machine. 90-foot (27.4 m) operating range.



Wireless Remote Hand Control 301582
For remote current and contactor control. Receiver plugs directly into the 14-pin receptacle of Miller machine. 300-foot (91.4 m) operating range.



RCC-14 Remote Contactor and Current Control 151086
East/west rotary-motion fingertip control attaches to TIG torch using two hook-and-loop fasteners. Includes 26.5-foot (8 m) cord with 14-pin plug.



RCCS-14 Remote Contactor and Current Control 043688
North/south rotary-motion fingertip control attaches to TIG torch using two hook-and-loop fasteners. Includes 26.5-foot (8 m) cord with 14-pin plug.

Distributed by:

