

Weldcraft™ W-400

Formerly WP-18SC

Hand-Held Water-Cooled
TIG Welding Torches



QUICK SPECS

Model

W-400 Super Cool

Applications

Aluminum ship repair	Pressure vessel fabrication
Exotic material fabrication	Tool and die
Heavy fabrication	Tube mills
Metal fabrication	Vocational
Pipe and tube fabrication	

Rated Output DC: 400 A, AC: 280 A

Duty Cycle 100%

Electrode Range .020–3/16 in. (0.5–4.8 mm)

W-400 Super Cool™ TIG torch

Formerly known as the WP-18SC, the W-400 Super Cool water-cooled torch is designed to endure some of the most demanding applications while minimizing overheating. The W-400 Super Cool is engineered with cost-effective solutions for high-amperage welding challenges.

Extend torch and consumable life with the full-flow water chamber that provides around-the-head cooling.

Improve gas coverage and cooling capacity with gas lens usage with heavy-duty stubby collet body.

Extend parts life using the durable copper components, maximizing current capacity.

Comfort and maximum torch control with the textured handle.

Note: Torches delivered may vary slightly from images shown.



W-400 Super Cool
(WP-18SC)



Miller Electric Mfg. LLC
An ITW Welding Company
1635 West Spencer Street
P.O. Box 1079
Appleton, WI 54912-1079 USA

Equipment Sales US and Canada
Phone: 866-931-9730
International Phone: 920-735-4554

MillerWelds.com



Torch Packages

MODEL		RUBBER	VINYL
Old Model	New Name	25 ft. (7.6 m)	25 ft. (7.6 m)
WP-18SC	W-400 Super Cool™	WP-18SC-25-R	WP-18SC-25

Torch packages include torch body, handle, power cable, gas hose, water hose, and long back cap.

Connectors

1-piece power cable connectors



195377
50 mm Dinse-style with water return line for water-cooled torch.



195380
50 mm Dinse-style gas thru with gas and water return lines for water-cooled torch.



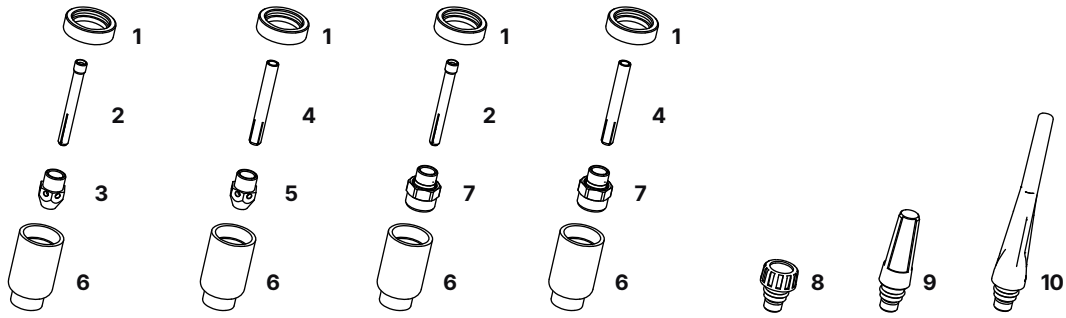
225028
50 mm thread-lock-style for water-cooled torch.



45V11
Power cable adapter for water-cooled torch.

MACHINES	CONNECTION TYPE	1-PIECE POWER CABLE CONNECTORS
TIG Machines		
CST™ 280/282	50 mm Dinse-style	195377
Dynasty® 200/210/280/300/350/400	50 mm Dinse-style	195377
Dynasty® 700/800	50 mm thread-lock	225028
Maxstar® 200/210/280/350/400	50 mm Dinse-style	195377
Maxstar® 700/800	50 mm thread-lock	225028
Syncrowave® 200/210/212	50 mm Dinse-style gas thru	195380
Syncrowave® 250 DX/300/350 LX/400	50 mm Dinse-style	195377
	1/2 in. stud	45V11
Multiprocess Machines		
Dimension™ 302/452/NT 450/650/652	1/2 in. stud	45V11
Dynasty® 280 DX Multiprocess/300 Multiprocess	50 mm Dinse-style	195377
Multimatic® 235/255	50 mm Dinse-style	195377
PipeWorx	1/2 in. stud	45V11
XMT® 304/350/400	50 mm Dinse-style	195377
XMT® 450/650	1/2 in. stud	45V11
Engine-Driven Machines		
Most Big Blue®, Trailblazer®, Bobcat™, Blue Star® and Wildcat® models	1/2 in. stud	45V11
Big Blue® 450 Duo CST	50 mm Dinse-style	195377
Other Adapter		
	Stud to Dinse-style adapter	232728

Consumables (Refer to Owner's Manual for additional replacement parts.)



NON-GAS LENS																
Electrode Size — inch (mm)	.040 (1.0)		1/16 (1.6)		3/32 (2.4)		1/8 (3.2)		5/32 (4.0)		3/16 (4.8)					
1 Insulator (required)	18NG		18NG		18NG		18NG		18NG		18NG					
2 Collet	10N22		10N23		10N24		10N25		—		—					
3 Collet Body	NCB-53		NCB-53		NCB-53		NCB-53		—		—					
4 Heavy-Duty Collet	—		—		—		10N25HD		54N20HD		18C36					
5 HD Nose Collet Body	—		—		—		NCB-36		NCB-36		NCB-36					
Nozzle Size — size # (inch)	4 (1/4)		5 (5/16)		6 (3/8)		7 (7/16)		8 (1/2)		10 (5/8)		12 (3/4)		Short	
6 Alumina	54N18		54N17		54N16		54N15		54N14		—		—		54N19	
* Long Alumina	—		54N17L		54N16L		54N15L		—		—		—		—	
GAS LENS																
Electrode Size — inch (mm)	.040 (1.0)		1/16 (1.6)		3/32 (2.4)		1/8 (3.2)		5/32 (4.0)		3/16 (4.8)					
1 Insulator (required)	18NG		18NG		18NG		18NG		18NG		18NG					
2 Collet	10N22		10N23		10N24		10N25		—		—					
4 Heavy-Duty Collet	—		—		—		10N25HD		54N20HD		18C36					
7 Gas Lens	—		18GL16		18GL32		18GL18		18GL53		18GL36					
Nozzle Size — size # (inch)	4 (1/4)		5 (5/16)		6 (3/8)		7 (7/16)		8 (1/2)		10 (5/8)		12 (3/4)		Short	
6 Alumina Gas Lens	54N18		54N17		54N16		54N15		54N14		—		—		54N19	
* Long Gas Lens	—		54N17L		54N16L		54N15L		—		—		—		—	
BACK CAPS																
8 Short 57Y04	9 Medium 300M		10 Long 57Y02													

*Not shown.

Tungsten

Tungsten for the most demanding TIG welding applications!

Available in four types and industry-standard diameters, our line of Weldcraft™ tungsten electrodes has undergone rigorous testing to ensure the highest quality and durability. Color-coded packages include ten 7-inch (175 mm) tungsten electrodes.

Note: Refer to manufacturer SDS sheets for proper preparation and safety. Use proper ventilation/capture during preparation. Refer to manufacturer warning regarding ventilation.

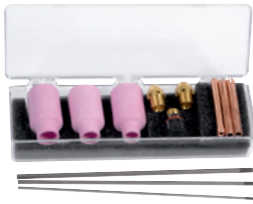


Type	Diameter in. (mm)	Part #	
2% Ceriated (EWCe-2)			
Performs well in DC welding and arc starting at low-current settings, and offers excellent performance in AC processes.	0.040 (1.0)	WC040X7	
	1/16 (1.6)	WC116X7	
	3/32 (2.4)	WC332X7	
	1/8 (3.2)	WC018X7	
Provides excellent arc starting, arc stability and re-ignition, and less tip erosion in AC or DC welding. Can substitute for 2% Thoriated.	5/32 (4.0)	WC532X7	
	2% Lanthanated (EWLa-2)		
	0.040 (1.0)	WL2040X7	
	1/16 (1.6)	WL2116X7	
Forms a clean, balled end when heated and provides good arc stability for AC welding with a balanced or unbalanced squarewave or sine wave.	3/32 (2.4)	WL2332X7	
	1/8 (3.2)	WL2018X7	
	5/32 (4.0)	WL2532X7	
	Pure (EWP)		
Combines the best of all alloying elements, and provides excellent arc stability in AC or DC welding.	0.040 (1.0)	—	
	1/16 (1.6)	WP116X7	
	3/32 (2.4)	WP332X7	
	1/8 (3.2)	WP018X7	
Rare Earth (EWG)	5/32 (4.0)	—	
	0.040 (1.0)	—	
	1/16 (1.6)	WG116X7	
	3/32 (2.4)	WG332X7	
Rare Earth (EWG)	1/8 (3.2)	WG018X7	
	5/32 (4.0)	—	

Replacement Parts

Torch Body		
W-400		WP-18SC
Handle		
Knurled		H-200
Braided Rubber Power Cables and Hoses		
	12.5 ft. (3.8 m)	25 ft. (7.6 m)
Power Cable	40V64R	41V29R
Water Hose	40V74R	41V32R
Gas Hose	40V75R18	41V30R18
Vinyl Power Cables and Hoses		
	12.5 ft. (3.8 m)	25 ft. (7.6 m)
Power Cable	40V64	41V29
Water Hose	40V74	41V32
Gas Hose	40V75	41V30

Genuine Miller® Accessories



Accessory Kit AK18C

Includes one short back cap, one of each size (#6, #7, #8) alumina nozzle, one of each size

(3/32, 1/8 HD, 5/32 HD) collet, one of each size (.020–1/8 inch, 1/8–3/16 inch) collet body, and one of each size (3/32, 1/8, 5/32 inch) 7-inch 2% ceriated tungsten electrode.

Extension Kit

EK-1-25-R 25 ft. (7.6 m), rubber



Cable Cover

WC-3-10 10 ft. (3 m)
WC-3-22 22 ft. (6.7 m)



Wireless Remote Foot Control 301580

For remote current and contactor control. Receiver plugs directly into the 14-pin receptacle of Miller machine. 90-foot (27.4 m) operating range.



Wireless Remote Hand Control 301582

For remote current and contactor control. Receiver plugs directly into the 14-pin receptacle of Miller machine. 300-foot (91.4 m) operating range.



RCC-14 Remote Contactor and Current Control 151086

East/west rotary-motion fingertip control attaches to TIG torch using two hook-and-loop fasteners. Includes 26.5-foot (8 m) with 14-pin plug.



RCCS-14 Remote Contactor and Current Control 043688

North/south rotary-motion fingertip control attaches to TIG torch using two hook-and-loop fasteners. Includes 26.5-foot (8 m) cord with 14-pin plug.



Low-Conductivity TIG Coolant 043810

Must be ordered in quantities of four. One-gallon recyclable plastic bottle. Miller coolants contains a base of ethylene glycol and deionized water to protect against freezing to -37° Fahrenheit (-38°C) or boiling to 227° Fahrenheit (108°C).

Distributed by:

