

Intellex™ Series

Constant-Speed
Wire Feeders



QUICK SPECS

Heavy Industrial Applications

General manufacturing	Transportation
General fabrication	Education
Structural steel fabrication	Repair shops
Sheet metal fabrication	Construction
Light-gauge tube and sheet	Pipe fabrication
Power generation plants	Rental fleets

Processes

MIG (GMAW)
Flux-cored (FCAW)
EZ-Set MIG (GMAW)*
EZ-Set Accu-Pulse® (GMAW-P)*
EZ-Set Versa-Pulse™ (GMAW-P)**
EZ-Set High-deposition MIG (GMAW)**
EZ-Set RMD® (Regulated Metal Disposition)**

*With Intellex™ Pro and Intellex™ Elite feeders.

**With Intellex™ Elite feeders.

Input Power 50 VDC

Wire Feed Speed 50–780 ipm
(1.3–19.8 m/min.)

Diameter Capacity .023–5/64 in. (0.6–2.0 mm)
Elite model only — Aluminum:
.035–1/16 in. (0.9–1.6 mm)

Net Weight Single-wire: 44.8 lb. (20.3 kg)
Dual-wire: 77 lb. (34.9 kg)

Heavy-industrial bench feeders with tiered features that cater to different applications, including push-pull capabilities.

Whatever your application, find the perfect fit. Whether you need an easy-to-use feeder, added pulse capabilities or the ability to weld multiple types of metals, there's a dedicated Intellex wire feeder for your Deltaweld® or XMT® 400 power source.



Intellex Basic feeder (single-wire)

Intellex Pro feeder (dual-wire)

Intellex Elite feeder (single-wire)

Three Intellex™ wire feeder options

- **Basic** with arc control feature means welders can produce better welds with minimal parameter adjustments.
- **Pro** adds EZ-Set, Accu-Pulse®, memory buttons and weld programs. EZ-Set simplifies parameter setup based on material thickness, while Accu-Pulse® provides a 28 percent wider operating window and a more forgiving arc (see page 3 for additional features).
- **Elite** adds additional weld programs, intuitive display with on-demand graphics and more control (see page 3 for additional features).

Easy to use. EZ-Set simplifies parameter setup based on material thickness, removing complexity.

User-friendly interface makes the system easy to set up and adjust with minimal training.

Feeders include .035/.045 in. V-groove drive rolls and a Bernard® BTB Gun 400 A (two with dual-wire feeders).



Wire feeder is warranted for three years, parts and labor.



Miller Electric Mfg. LLC
An ITW Welding Company
1635 West Spencer Street
P.O. Box 1079
Appleton, WI 54912-1079 USA

Equipment Sales US and Canada
Phone: 866-931-9730
International Phone: 920-735-4554

MillerWelds.com



Intellx™ Feeders Features



Balanced-pressure drive-roll design and tensioners feed wire in its truest and straightest form for consistent feedability, resulting in better welding performance.

Accu-Mate™ connection aligns the gun perfectly in the drive-roll carrier — preventing the gun from being pulled loose and providing consistent wire feeding.

Drive rolls and guides are common with other Miller® industrial feeders (use existing, not new parts).

Inlet guide and intermediate guide installation is toolless.

Rotatable drive assembly allows operator to rotate the drive, eliminating severe bends in the wire feed path. This extends gun-liner life and aids in feeding difficult wires.

Dual-wire models allow two different wire types to be available on one feeder, avoiding downtime from changing spools and drive rolls.



Intellx Pro single-wire feeder

- Memory buttons for quick program recall
- Display and controls for volts/arc length, wire feed speed, and EZ-Set (if selected)
- Arc control to fine tune the welding arc
- LCD setup screen for easy selection of welding processes
- Jog and purge button
- Trigger hold, trigger select, preflow and postflow buttons



Intellx Elite single-wire feeder

- Soft keys to easily navigate menus
- Full-color LCD screen to simplify the setup and operation of a fully featured feeder
- Arc control to fine tune welding arc
- Memory buttons for quick program recall
- Trigger connections for standard MIG gun and XR-Aluma-Pro™ Plus and XR™-Pistol Plus push-pull guns



Intellex™ Feeders Comparison



FEATURE	INTELLEX BASIC FEEDER	INTELLEX PRO FEEDER	INTELLEX ELITE FEEDER
Digital meters	■	■	Full color LCD
Remote voltage	■	■	■
Wire feed speed	■	■	■
Arc control	■	■	■
Trigger hold	■	■	■
Wire jog and purge	■	■	■
Wire feed speed feedback	■	■	■
Four drive rolls	■	■	■
Dual-wire models	■	■	■
Rotatable drive	■	■	■
Up to 60 lb. spool	■	■	■
MIG process	■	■	■
Insight Centerpoint™ Basic compatible*	■	■	■
EZ-Set MIG and Accu-Pulse®		■	■
Trigger select		■	■
Preflow and postflow		■	■
Memory slots		2	8
Out-of-box programs (steel/stainless/aluminum)		■	■
Out-of-box programs (nickel/copper nickel/silicon bronze/titanium)			■
EZ-Set Versa-Pulse™, high-deposition MIG and RMD®			■
XR™ Plus push-pull gun compatible			■
Profile Pulse™			■
Weld sequence control			■
Trigger dual schedule			■
Dual schedule switch support			■
Parameter limits			■
Memory lockouts			■
System lock			■
Wire retract			■
Auto thread and auto purge			■
Cloning and custom weld library			■
Remote gouge**			■
Insight Centerpoint™ Premium compatible*			■

*ONLY with Deltaweld 350, 500 or 600 power source. Insight module required.
 **ONLY with Deltaweld 500 or 600 power source.

Processes

- MIG
- Flux-cored
- EZ-Set MIG (Intellex Pro and Intellex Elite)
- EZ-Set Accu-Pulse® (Intellex Pro and Intellex Elite)
- EZ-Set Versa-Pulse™ (Intellex Elite)
- EZ-Set High-deposition MIG (Intellex Elite)
- EZ-Set RMD® (Intellex Elite)



Intellex Pro and Intellex Elite Feeder Programs

- Different wire sizes
- Different gas types
- Flux-cored
- Metal-cored
- Steel
- Stainless steel
- Aluminum

Additional Intellex Elite Feeder Programs

- Nickel
- Copper nickel
- Silicon bronze
- Titanium

Intellex™ Feeder Specifications (Subject to change without notice.)



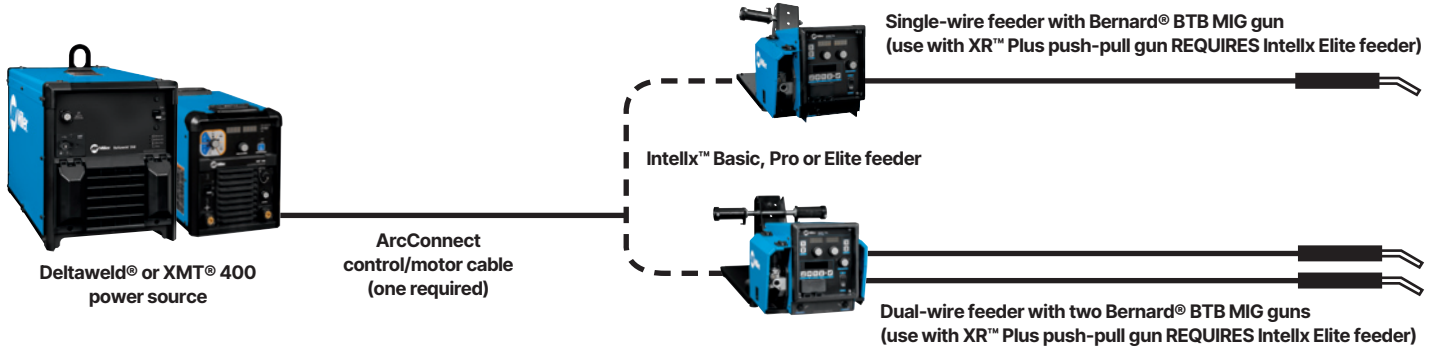
INPUT POWER	WELDING POWER SOURCE	INPUT WELDING CIRCUIT RATING	WIRE FEED SPEED	WIRE DIAMETER CAPACITY	MAXIMUM SPOOL SIZE CAPACITY	DIMENSIONS (H x W x D)	NET WEIGHT
50 VDC	Deltaweld® 350, 500 or 600 and XMT® 400	600 A at 113 VDC, 60% duty cycle	50–780 ipm (1.3–19.8 m/min.)	.023–5/64 in. (0.6–2.0 mm) Elite model only — Aluminum: .035–1/16 in. (0.9–1.6 mm)	18 in. (457 mm) 60 lb. (27 kg)	Single-wire: 16.25 x 12.38 x 27.88 in. (413 x 314 x 708 mm) Dual-wire: 14 x 18 x 34.5 in. (356 x 457 x 876 mm)	Single-wire: 44.8 lb. (20.3 kg) Dual-wire: 77 lb. (34.9 kg)

CS Certified by Canadian Standards Association to both the Canadian and U.S. Standards.



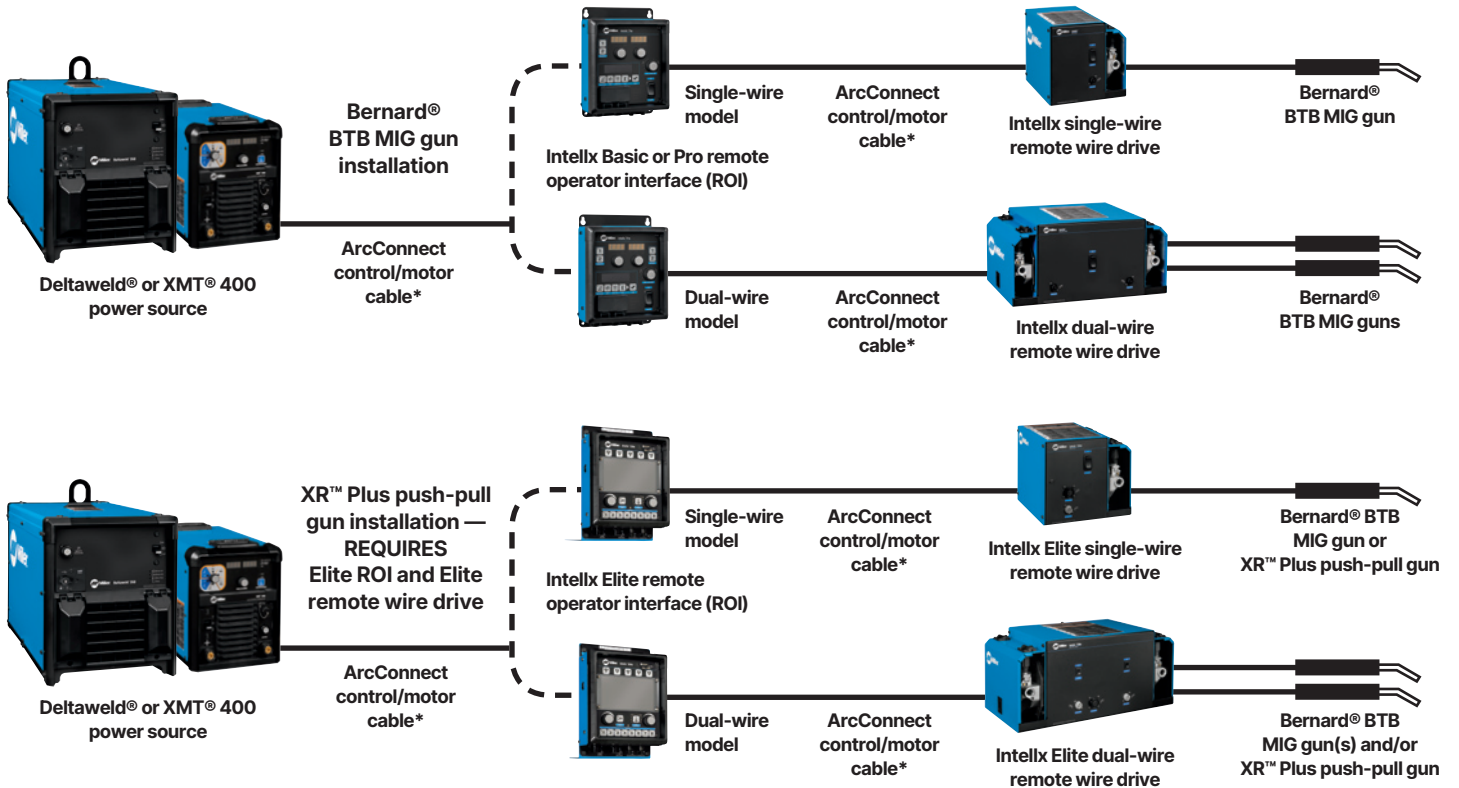
Compatible System Installations

Standard installation



Remote wire drive installations

Ideal for fixed automation and boom applications where the wire drive motor is installed/controlled remotely.

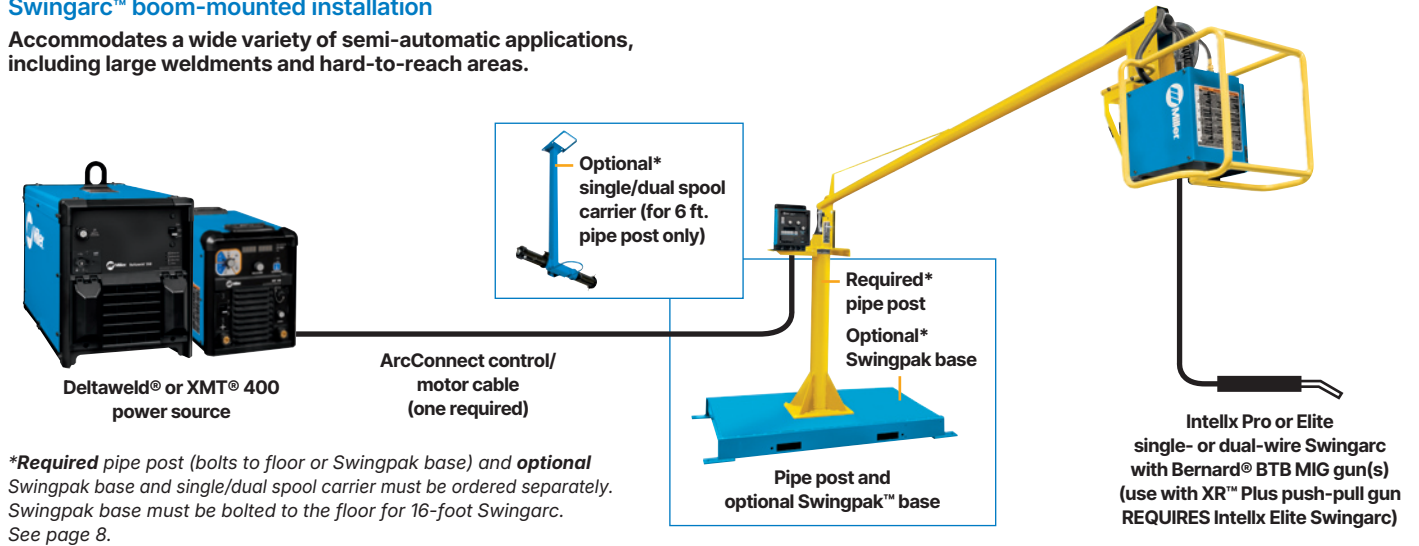


*Remote wire drive installations require two total control/motor cables.

Compatible System Installations

Swingarc™ boom-mounted installation

Accommodates a wide variety of semi-automatic applications, including large weldments and hard-to-reach areas.



Genuine Miller® Accessories



Spool Covers
295231 For single-wire feeders and left side of dual-wire feeders
090389 For right side of dual-wire feeders

For 12-inch (305 mm) spool.

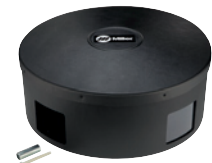
Note: Spool covers cannot be installed if the wire drive assembly is in a rotated position.



Spool Adapter 047141
 For use with 14-pound (6.4 kg) spool of Lincoln self-shielding wire.



Wire Reel Assembly 108008
 For 60-pound (27 kg) coil of wire.

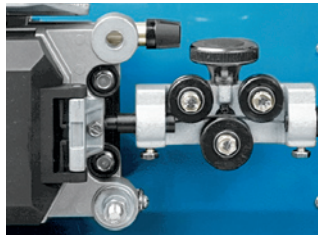


Reel Covers
195412 For single-wire feeders and left side of dual-wire feeders
091668 For right side of dual-wire feeders
 For 60-pound (27 kg) coil. Helps to protect the welding wire from dust and other contaminants.

Note: Reel covers cannot be installed if the wire drive assembly is in a rotated position.



Hanging Bail (Electrically Isolated) 058435
 Used for suspending feeder over work area.



Wire Straightener
141580 For .035–.045 inch (0.9–1.1 mm) diameter wire.
141581 For 1/16–1/8 inch (1.6–3.2 mm) diameter wire.

Helps reduce the cast in wire to improve wire feeding performance and increase the service life of the gun liner and contact tip.



ArcConnect Control/Motor Cables
280471009 9 ft. (2.7 m)
280471015 15 ft. (4.6 m)
280471025 25 ft. (7.6 m)
280471050 50 ft. (15.2 m)
280471075 75 ft. (22.9 m)
280471100 100 ft. (30.5 m)
280471150 150 ft. (45.7 m)

Connects power source directly to feeder or remote operator interface.

Note: Cables cannot be joined together to create longer lengths and extension cables are not available.



Work Sense Leads (volt sense)
300461 25 ft. (7.6 m)
300462 50 ft. (15.2 m)

When connected from the back of the wire feeder to the workpiece, the work sense lead provides accurate voltage feedback on the wire feeder display, and compensates for any voltage drop from the weld cables.



AccuLock™ Nozzle N-A3412C
ONLY for use with Intellx™ Elite feeders. Required for high-deposition MIG (HD MIG) process when using Bernard® BTB gun with AccuLock consumables.



Industrial MIG 4/0 Kit with lugs
300390 For single-wire feeders
300957 For dual-wire feeders
 For use with Deltaweld® power sources. Consists of flowmeter regulator with 10-foot (3 m) gas hose, 10-foot (3 m) 4/0 feeder weld cable with lugs, and 15-foot (4.6 m) work cable with 600-amp C-clamp. Dual kit comes with two flowmeter regulators and gas hoses.



Industrial MIG 4/0 Kit with Dinse Connectors
300405 For single-wire feeders
300956 For dual-wire feeders
 For use with XMT® 400 power sources. Consists of flowmeter regulator with 10-foot (3 m) gas hose, 10-foot (3 m) 4/0 feeder weld cable with Dinse-style connector on one end and a lug on the other, and 15-foot (4.6 m) work cable with Dinse-style connector on one end and 600-amp C-clamp on the other. Dual kit comes with two flowmeter regulators and gas hoses.

Dinse-Style Cable Connectors

Dinse-Style Connectors

042418 Accepts #4 to #1/0 AWG cable
042533 Accepts #1/0 to #2/0 AWG cable
 Kits include one Dinse-style male plug which attaches to the work and/or weld cables and plugs into the Dinse-style receptacles on the power source.

Extension Kit for Dinse-Style Cable Connectors 042419

Accepts #4 to #1/0 AWG cable. Used to adapt or extend weld and/or work cables. Kit includes one male Dinse-style plug and one in-line female Dinse-style receptacle.

Extensions for Dinse-Style Cable Connectors

134460 Male Dinse-style plug
136600 Female Dinse-style receptacle
 Used to adapt or extend weld and/or work cables. Accepts #1/0 to #2/0 AWG cable.

XR™ Plus Push-Pull Guns (ONLY for use with Intelx™ Elite feeder/ROI/Swingarc™.)



XR-Aluma-Pro™ Plus Guns
Air-Cooled
301575 15 ft. (4.6 m)
301574 25 ft. (7.6 m)
301739 35 ft. (10.7 m)
Water-Cooled
301576 15 ft. (4.6 m)
301577 25 ft. (7.6 m)
301740 35 ft. (10.7 m)

XR™-Pistol Plus Guns
Air-Cooled
300753 15 ft. (4.6 m)
300754 25 ft. (7.6 m)
Water-Cooled
300757 25 ft. (7.6 m)

Available in air- or water-cooled versions in multiple lengths for extended reach with trouble-free, reliable feeding.

Aluminum-series-specific tension setting ensures smooth wire feeding performance with 4000 or 5000 series aluminum wires.

Replaceable feed cable liner is designed to provide consistent arc performance. It also reduces parts cost and service time by allowing a simple means of removing and replacing liner and not the complete feed cable.

Isolated common knurled drive roll helps reduce wear, reducing down time and cost.

Easy-to-rotate self-seating head tube allows for better access into tight spots, providing excellent current transfer.

Serviceability. These guns feature a full-length hook-and-loop sealed leather jacket with integrated strain reliefs for easy cable maintenance and protection. Additionally, the Aluma-Pro Plus guns feature quick connections between the control cable and electrical components (trigger, motor, potentiometer).

Specifications (Subject to change without notice.)

MODEL	WELDING CURRENT RATING	WIRE FEED SPEED	WIRE TYPE AND DIAMETER CAPACITY	DIMENSIONS	NET WEIGHT (GUN ONLY)
XR-Aluma-Pro Plus (Air-cooled)	300 A at 100% duty cycle	70–900 ipm (1.8–23 m/min.) dependent on feeder used	.030–1/16 in. (0.8–1.6 mm) aluminum wire	H: 5 in. (127 mm) W: 2.5 in. (64 mm) D: 17 in. (432 mm)	2.5 lb. (1.1 kg)
XR-Aluma-Pro Plus (Water-cooled)	400 A at 100% duty cycle	70–900 ipm (1.8–23 m/min.)	Requires gun wire kit 230708 to run 1/16 in. (1.6 mm) wire		2.9 lb. (1.3 kg)
XR-Pistol Plus (Air-cooled)	200 A at 100% duty cycle 250 A at 60% duty cycle	70–900 ipm (1.8–23 m/min.)	.030–1/16 in. (0.8–1.6 mm) aluminum wire	H: 7.375 in. (187 mm) W: 1.875 in. (48 mm) D: 10.625 in. (270 mm)	2.2 lb. (1 kg)
XR-Pistol Plus (Water-cooled)	400 A at 100% duty cycle		Requires gun wire kit 230708 to run 1/16 in. (1.6 mm) wire		2.4 lb. (1.1 kg)

Note: XR Plus guns are only compatible with MPa Plus feeder, Intelx Elite feeder, Intelx Elite ROI/remote wire drive or Intelx Elite Swingarc boom-mounted feeder.

Certified by Canadian Standards Association to both the Canadian and U.S. Standards. Conforms to European standards.

Drive Roll Kits and Guides

Select drive roll kits from chart below according to type and wire size being used. Drive roll kits include four drive rolls, necessary guides and feature an anti-wear sleeve for inlet guide.

WIRE SIZE	V-GROOVE FOR HARD WIRE	U-GROOVE FOR SOFT WIRE OR SOFT-SHELLED CORED WIRES	V-KNURLED FOR HARD-SHELLED CORED WIRES	U-COGGED FOR EXTREMELY SOFT WIRE OR SOFT-SHELLED CORED WIRES, (I.E., HARD FACING TYPES)
.023/.025 in. (0.6 mm)	087132	—	—	—
.030 in. (0.8 mm)	046780	—	—	—
.035 in. (0.9 mm)	046781	044750	046792	—
.040 in. (1.0 mm)	191917	—	—	—
.045 in. (1.1/1.2 mm)	046782	046785	046793	083319
.052 in. (1.3/1.4 mm)	046783	046786	046794	—
1/16 in. (1.6 mm)	046784	046787	046795	046800
.068/.072 in. (1.8 mm)	—	—	—	—
5/64 in. (2.0 mm)	—	046788	046796	046801

*Included with Intelx feeder packages. Drive roll is dual-size reversible with one .035-inch and one .045-inch groove.

**Included with push-pull gun packages. Drive roll is dual-size reversible with one .035-inch and one .045-inch groove which also accommodates .047-inch (3/64-inch) wire.

Wire Guides

WIRE SIZE	INLET GUIDE	INTERMEDIATE GUIDE
.023–.040 in. (0.6–1.0 mm)	221030	056206
.045–.052 in. (1.2–1.3 mm)	221030	056207
1/16–5/64 in. (1.6–2.0 mm)	221030	056209
5/64–1/8 in. (2.0–3.2 mm)	229919	056211

Note: When ordering hard wire kits, retain factory-supplied inlet guide.

Nylon Guides for Feeding Aluminum

WIRE SIZE	INLET GUIDE AND INTERMEDIATE GUIDE KITS
.035 in. (0.9 mm)	293928
.047 in. (1.2 mm)	293929
1/16 in. (1.6 mm)	293930

Note: U-groove drive rolls are recommended when feeding aluminum wire.

Ordering Information (Most popular model ◀)

EQUIPMENT	STOCK NO.	DESCRIPTION	QTY.	PRICE
Intellx™ Basic Bench-Style Wire Feeders	951783001 951815001	Single-wire feeder with Bernard BTB Gun 400 A Dual-wire feeder with two Bernard BTB Gun 400 A		
Intellx™ Pro Bench-Style Wire Feeders	951784001 ◀ 951816001	Single-wire feeder with Bernard BTB Gun 400 A Dual-wire feeder with two Bernard BTB Gun 400 A		
Intellx™ Elite Bench-Style Wire Feeders	951941001 951942001	Single-wire feeder with Bernard BTB Gun 400 A Dual-wire feeder with two Bernard BTB Gun 400 A		
Intellx Basic Remote Operator Interface (ROI)	301548 301551	Control box for single-wire drive assembly Control box for dual-wire drive assembly		
Intellx Pro Remote Operator Interface (ROI)	301552 301553	Control box for single-wire drive assembly Control box for dual-wire drive assembly		
Intellx Elite Remote Operator Interface (ROI)	301606 301607	Control box for single-wire drive assembly. ONLY for use with Intellx Elite remote wire drive Control box for dual-wire drive assembly. ONLY for use with Intellx Elite remote wire drive		
Intellx Remote Wire Drives	301554 301555	Single-wire drive assembly Dual-wire drive assembly		
Intellx Elite Remote Wire Drives	301722 301723	Single-wire drive assembly. ONLY for use with Intellx Elite ROI Dual-wire drive assembly. ONLY for use with Intellx Elite ROI		
Intellx Pro Swingarc™ Boom-Mounted Wire Feeders	951804001 951806001 951932001	12 ft. single-wire model with Bernard BTB Gun 400 A 16 ft. single-wire model with Bernard BTB Gun 400 A 12 ft. dual-wire model with two Bernard BTB Gun 400 A		
Intellx Elite Swingarc™ Boom-Mounted Wire Feeders	951000091 951000093 951000092	12 ft. single-wire model with Bernard BTB Gun 400 A 16 ft. single-wire model with Bernard BTB Gun 400 A 12 ft. dual-wire model with two Bernard BTB Gun 400 A		
Pipe Post	149838 149839	4 ft. pipe post. Required for mounting Swingarc booms 6 ft. pipe post. Required for mounting Swingarc booms		
Swingpak™ Base	183997	Optional mounting platform for pipe post		
Single/Dual Spool Carrier	300352	Optional spool carrier for 6 ft. pipe post		
Power Sources				
Deltaweld® 350 and 500		See literature DC/16.5 and DC/16.7		
XMT® 400		See literature DC/18.99		
Accessories				
Spool Covers	295231 090389	For single-wire feeders and left side of dual-wire feeders For right side of dual-wire feeders		
Spool Adapter	047141			
Wire Reel Assembly	108008			
Reel Covers	195412 091668	For single-wire feeders and left side of dual-wire feeders For right side of dual-wire feeders		
Hanging Bail	058435			
Wire Straightener		See page 6		
ArcConnect Control/Motor Cables		See page 6 for available lengths		
Work Sense Leads (volt sense)		See page 6 for available lengths		
AccuLock™ Nozzle	N-A3412C	ONLY for use with Intellx Elite wire feeder, Elite ROI/remote wire drive or Elite Swingarc boom-mounted wire feeder		
Industrial MIG 4/0 Kits		See page 6		
Dinse-Style Cable Connectors		See page 6		
Bernard® BTB Gun 400 A	Q4015AE9EMC	400 A, 15 ft. (4.6 m) with AccuLock™ consumables		
XR™ Plus Push-Pull Guns		ONLY for use with Intellx Elite wire feeder, Elite ROI/remote wire drive or Elite Swingarc boom-mounted wire feeder. See page 7		
Drive Roll Kits and Guides		See page 7		

With AccuLock™
consumables and
.035/.045 in. V-groove
drive rolls

With AccuLock™
consumables and
.035/.045 in. V-groove
drive rolls

DATE: _____ TOTAL QUOTED PRICE: _____

Distributed by:

