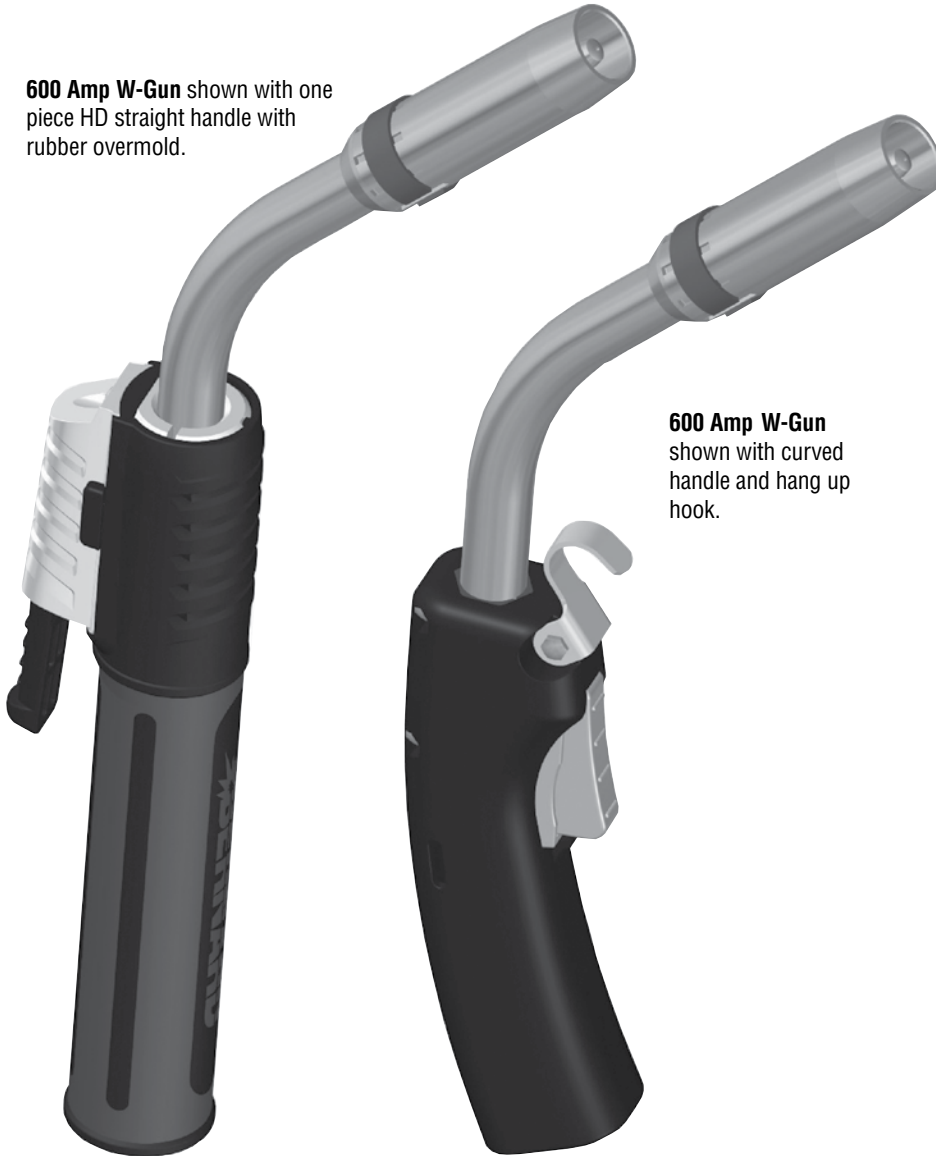


W-Gun Series

600 Amp Water-Cooled MIG Guns

Issued Sept. 2014 • Index No. SPEC WCSA-1.5

600 Amp W-Gun shown with one piece HD straight handle with rubber overmold.



600 Amp W-Gun shown with curved handle and hang up hook.

All Guns are Not Created Equal.

A MIG gun should be durable, easy to use and customized to your specific application. Our MIG guns put you in control: you choose the options you need and we'll build a gun to last.

Flexible cable assembly with reinforced synthetic rubber hoses prevents water leakage and provides increased water flow and reduced gas leakage.

Newly designed back end and water block with interchangeable direct plugs and trigger leads connect to wire feeders and machines from major manufacturers and allow for simple maintenance.

Multiple handle and trigger options to increase operator comfort.

Heavy duty water-cooled necks are offered in multiple length and bend configurations to allow for optimal weld accessibility and improved operator comfort.

Contact tip options include Centerfire™, Elliptical and Quik Tip™ and are available in wire sizes from .023" (0.6 mm) to 3/32" (2.4 mm).

W600 Amperage Ratings

Amps	Duty Cycle	Description
600	100%	CO ₂ Gas
600	100%	80%AR20%CO ₂

Bernard

A Division of Miller Electric Mfg. Co.
449 West Corning Road, Box 667
Beecher, Illinois 60401 USA

Phone: 1-855-MIGWELD (644-9353) (US & Canada Only)
1-519-737-3030 (International)
Fax: 708-946-6726
For more information, visit us at BernardWelds.com



Replacement Parts List

ITEM #	PART NUMBER	DESCRIPTION
1	See Back Page	Consumables
2	See Back Page	Neck, Water Cooled
3	2300003	Set Screw (2 Req'd)
4	9176	Cable Tie
5	2520041	Spring Strain Relief
6		Rigid Strain Relief Kit (Includes Top & Bottom Halves)
	2520076	Strain Relief with Installed Gas Pin (Bernard Direct Plug)
	2520080	Strain Relief (Euro Direct Plug)
	2520077	Strain Relief (All Other Direct Plugs)
7a	2280056	Screw, Strain Relief (1 Req'd)
7b	1620003	Screw Cover, Strain Relief (1 Req'd)
8	2200122	Water Block Assembly
9	1520005	Clamp, Hose
10	2520033	Strain Relief, Hose
11	RSH-OUT	Hose Assembly, "Water Out"
12	RSH-IN	Hose Assembly, "Water In"
13	2950018	End Cap, Red
14	2950017	End Cap, Blue
15	4234	Quick Connect Fitting, Male
16	1010027	Adapter Block (Not Req'd on Bernard or Euro Direct Plug)
17	See Direct Plug Spec Sheet	Direct Plug Components
18	See Universal Liner Spec Sheet	Liner Assembly
19		Control Plug
	GN2021	Single Schedule (Not Req'd on Bernard or Euro Direct Plug)
	20006A	Dual Schedule (Not Req'd on Bernard or Euro Direct Plug)
20	1880198	Handle Kit, Standard Trigger (Includes Items 24 & 25)
		Handle Kit, Locking Trigger (Includes Items 24 & 25)
		Handle Kit, Dual Pull Trigger (Includes Items 24 & 25)
	DSA-1	Handle Kit, Dual Schedule, Standard Trigger
		Handle Kit, Dual Schedule, Locking Trigger

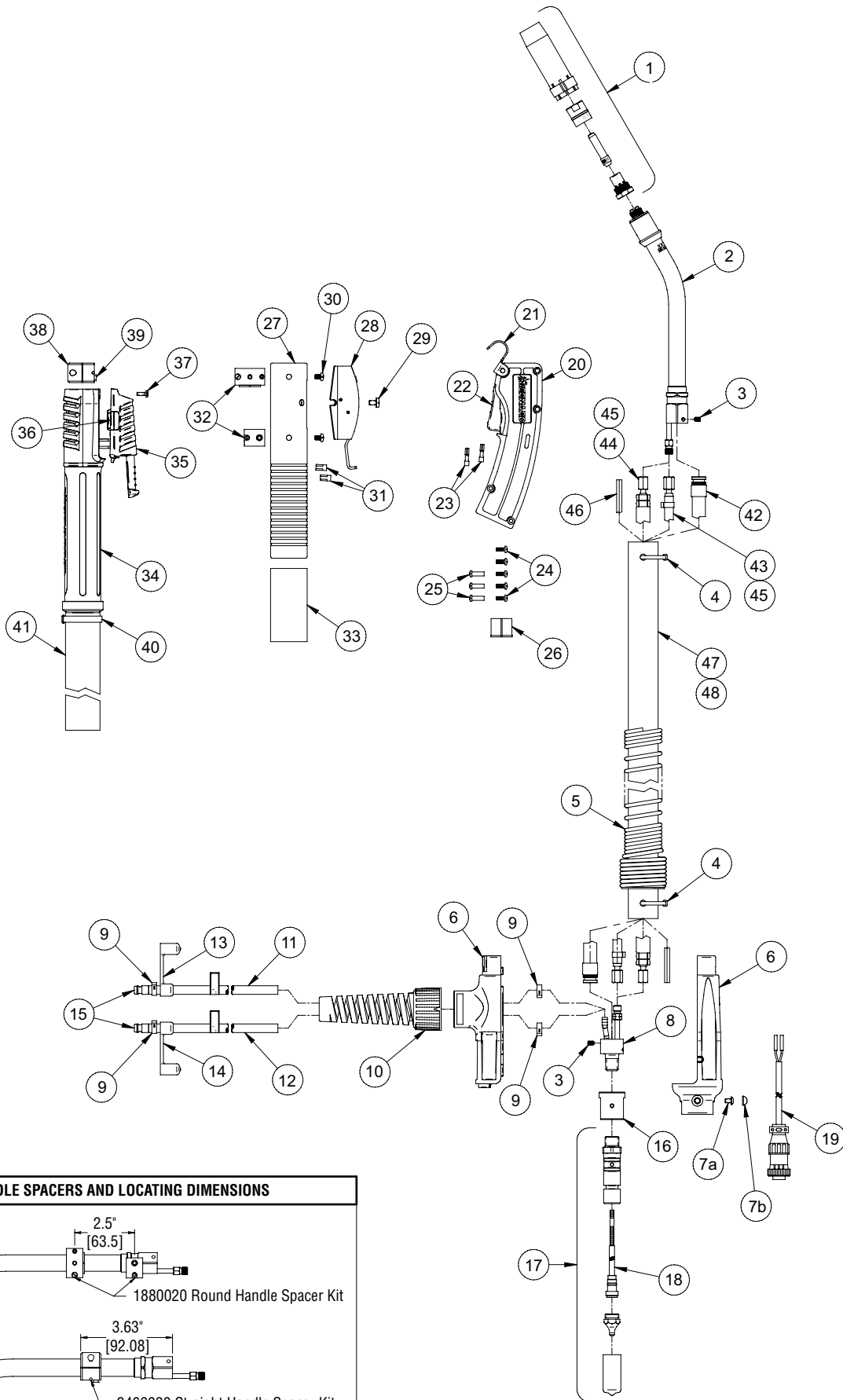
ITEM #	PART NUMBER	DESCRIPTION
21	1790002	Hang Up Hook Kit (Includes Hook, Screw, & Post)
22	5662	Trigger, Standard
	5662L	Trigger, Locking
	2690001	Trigger, Dual Pull, 3 Wire (Includes Terminals)
23	2660001	Terminal, Quick Disconnect (2 Req'd)
24	4209	Screw, Handle (5 Req'd)
25	4207	Post Fastener (3 Req'd)
26	5626	Hex Bushing
27	408W	Handle Kit, Round (Includes Item 30)
27	422	Trigger, Locking (Includes Item 29)
29	418	Screw, Trigger (2 Req'd)
30	2280002	Screw, Handle (4 Req'd)
31	457	Terminal, Flag (2 Req'd)
32	1880020	Spacer Kit (Includes Spacers, Hex Bushing, & Screws)
33	8164	Shrink Tube (3" Req'd)
34	1880243	Handle Kit, Straight (Includes Items 37, 40, & 41)
35	2690064	Trigger, Standard Locking
	2690067	Trigger, Locking W/ Dual Schedule
36	2190009	Plug (Standard Locking Trigger)
	2690062	Speed Switch Cover (Dual Schedule Trigger)
NS	2620078	Leaf Spring (Dual Schedule Trigger)
NS	4932	Butt Connector
37	4209	Screw, Trigger (1 Req'd)
38	2460030	Spacer Assembly (Includes Screws & Item 39)
NS	20059	Screw, Spacer (2 Req'd)
39	2280049	Screw, Handle (2 Req'd)
40	407709-013	Clamp, Sleeve
41	1860015	Sleeve (18" Req'd)

ITEM #	8' (2.44 m)	10' (3.05 m)	12' (3.66 m)	15' (4.57 m)	20' (6.10 m)	25' (7.62 m)	DESCRIPTION
42	WC2CA-6	WC2CA-1	C2CA-2	WC2CA-3	WC2CA-4	WC2CA-5	Conduit Assembly (Replacement O-Ring Part #2040008)
43	RRH-08	RRH-10	RRH-12	RRH-15	RRH-20	RRH-25	Return Hose Assembly
44	RPC-08	RPC-10	RPC-12	RPC-15	RPC-20	RPC-25	Power Cable Assembly
45	RCS-08	RCS-10	RCS-12	RCS-15	RCS-20	RCS-25	Return Hose and Power Cable Set (Includes Items 43 & 44)
46	WC2CW-4	WC2CW-1	WC2CW-2	WC2CW-3	WC2CW-5	WC2CW-6	Control Wire Assembly (Includes Terminals)
47	WC2OC-6	WC2OC-1	WC2OC-2	WC2OC-3	WC2OC-4	WC2OC-5	Outer Cover
48	RCA-08	RCA-10	RCA-12	RCA-15	RCA-20	RCA-25	Cable Assembly (Includes Items 42, 43, 44, 46, & 47)

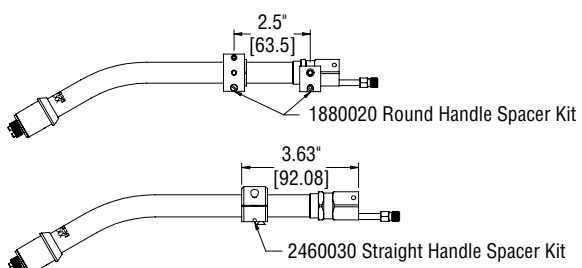
OPTIONAL ACCESSORIES (not shown)

PART #	DESCRIPTION
WC2HK-1	Water Cooler Hookup Kit Includes two 15' hoses and fittings to connect our gun to a water cooler.
WC2HK-2	Water Cooler Hookup Kit Includes two 30' hoses and fittings to connect our gun to a water cooler.

Replacement Parts List

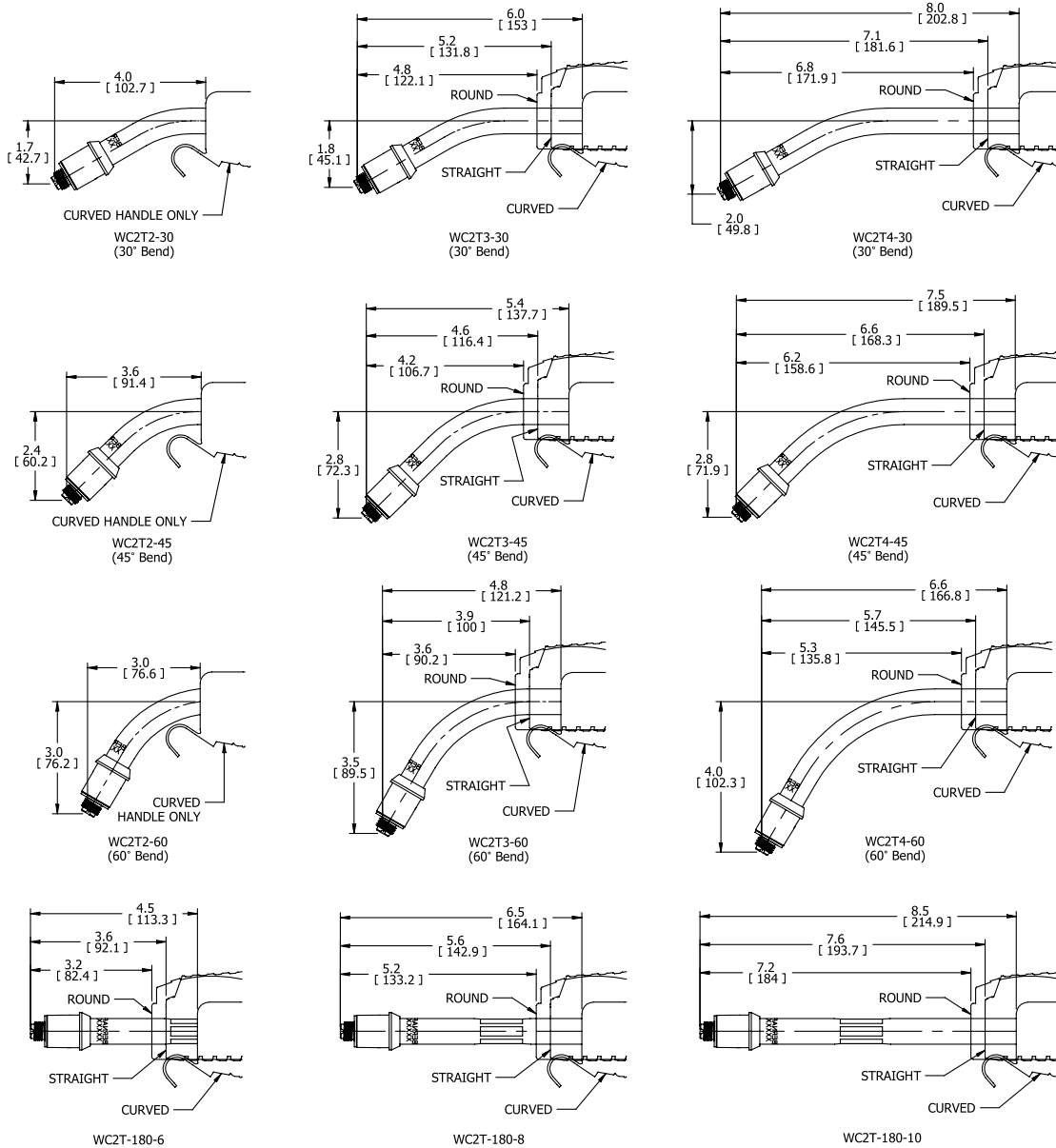


HANDLE SPACERS AND LOCATING DIMENSIONS

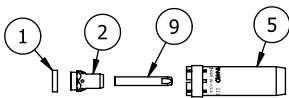


Note: Dimensions shown in brackets are in millimeters.

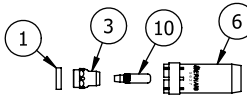
Available Necks and Consumables



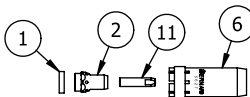
Note: Dimensions shown in brackets are in millimeters.



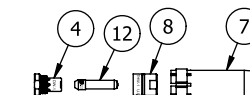
Elliptical - 1500 Series



Quik Tip Series



Elliptical - 7400 Series



Centerfire Series

ITEM #	PART NUMBER	DESCRIPTION
1	1840003	Insulator
2	5623	Diffuser, W/C, Elliptical
3	1070101	Diffuser, W/C, Quik Tip
4	DW-1	Diffuser, W/C, Centerfire
5	1110007	Nozzle Assembly, W/C, 1/8" Recess, 1500 Series
6	5627	Nozzle Assembly, W/C, 1/8" Recess, 7400 & Quik Tip
	1110015	Nozzle Assembly, W/C, 3/16" Recess, 1/2" orifice, 7400 & Quik Tip
7	NW-3418C	Nozzle Assy, W/C, 1/8" Recess, Centerfire
	NW-3414C	Nozzle Assy, W/C, 1/4" Recess, Centerfire
8	THW-1	Tip Holder, W/C, Centerfire
9	See Elliptical Series Spec Sheet	Elliptical Contact Tip, 1500 Series
10	See Quik Tip Spec Sheet	Quik Tip
11	See Elliptical Series Spec Sheet	Elliptical Contact Tip, 7400 Series
12	See Centerfire Spec Sheet	Centerfire Tip